

Exploring Regional Variation and Survival in Colon Cancer Pathway Concordance

Research Roundtable: Data Analytics in Healthcare

Rotman School of Management

March 9, 2020

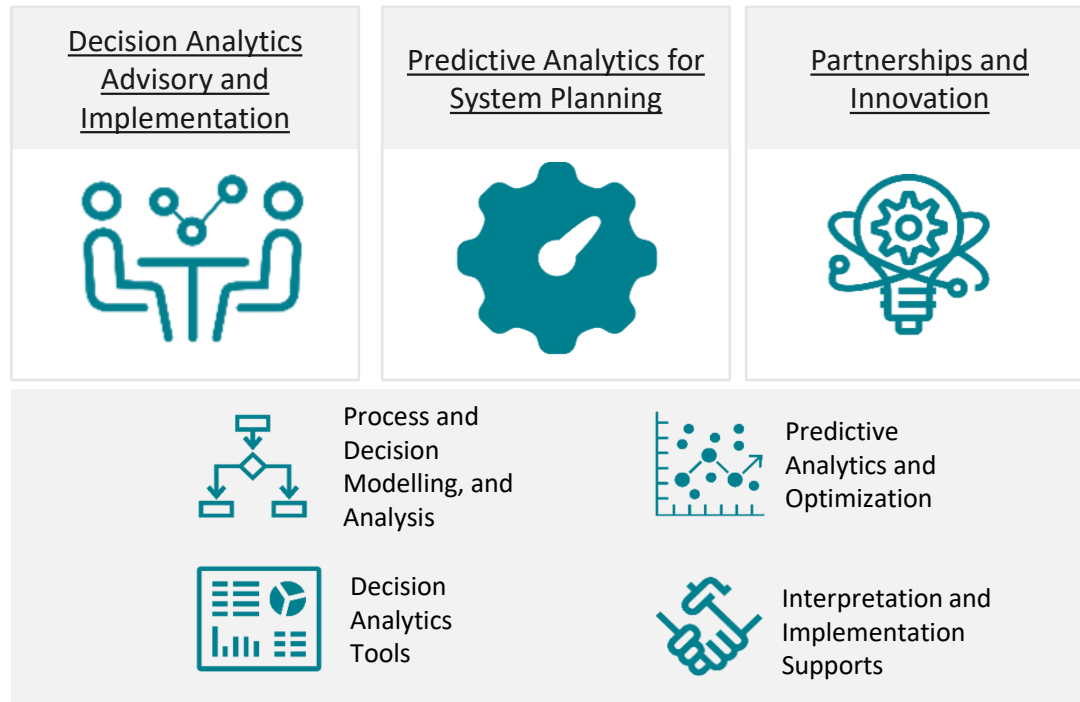
Luciano Ieraci, Maria Eberg

Data and Decision Sciences, Ontario Health (CCO)



Ontario Health
Cancer Care Ontario

D+DS Provides Advanced Analytics Competency for Health System Management





Background to Disease Pathway Measurement

What Are Pathway Maps?



Flowcharts that describe the care cancer patients should receive based on **best available evidence**



Quality improvement tool for the **Ontario cancer system**



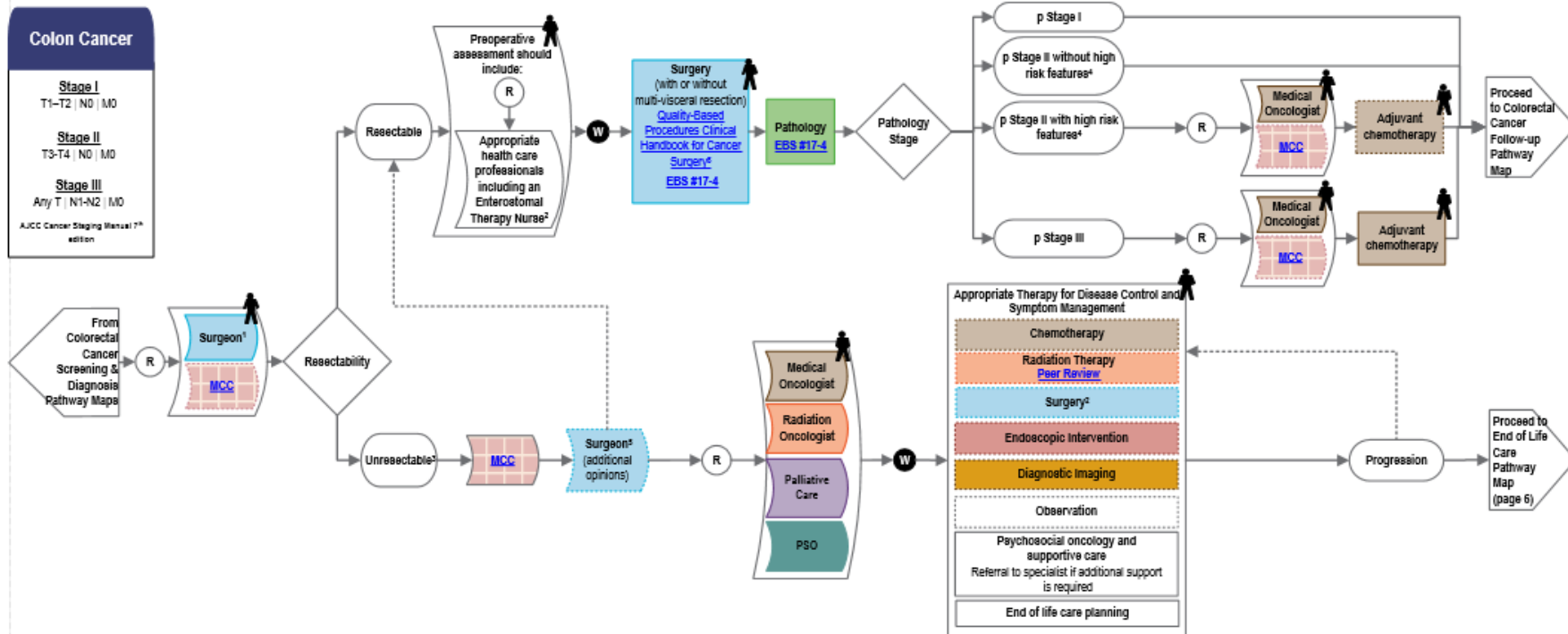
Population based, organized by cancer type (e.g. lung cancer) and span the entire care continuum



Sequences of interventions with care teams, specialties, programs – *does not include specific protocols, regimens, costs, etc.*



Example – Colorectal Cancer Pathway Map



Why Do We Develop Pathway Maps?

GOAL

- Facilitate improvements in quality, access, appropriateness, and coordination of care across the cancer continuum.
- Set care expectations for cancer patients in Ontario, based on best scientific evidence
- Reduce undesired variation in care
- Promote discussion and collaboration between care providers, health administrators, system planners, and educators





Introduction to Pathway Concordance Measurement

Pathway Concordance Objectives

- Quantifies agreement between actual care received and care recommended by the pathway map



Are we following the ideal path?

What, where & why are there deviations?



Pathway Concordance Objectives



1. Develop methodology to measuring pathway concordance using CCO's current data holding at a population and system level. Focus at the system level or specific section of the pathway. These methods do not exist currently.



2. Create capability to link to outcomes of interest to monitor system performance

- Clinical outcomes – survival, recurrence, patient-reported outcomes
- Health system costs



3. Establish metric for ongoing evaluation and performance measurement, system monitoring

- Identify deviations from pathway map and effects on outcomes
- Support quality initiatives and performance management





Approach and Methods

Population and Data Sources

Cohort

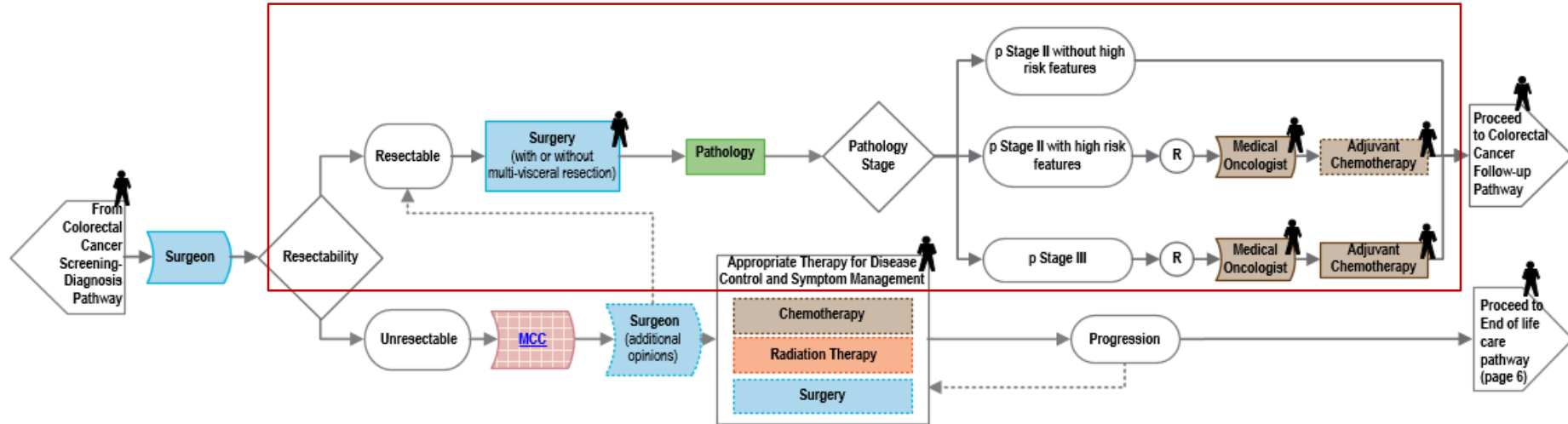
- Ontario Cancer Registry
 - Accrual from Jan 1, 2012 to Dec 31, 2016
 - Follow-up until death or Mar 31, 2019
- Incident stage II and III colon cancer
 - Pathologically-confirmed
- Exclusions:
 - Non-Ontario resident / invalid health card
 - Had more than one primary tumour
 - Evidence of non-curative treatment before surgery

Health services

- Radiation, chemotherapy (Activity Level Reporting, Ontario Drug Benefit population)
- Physician services (Ontario Claims History Database)
- Hospital services (National Ambulatory Care Reporting System , Discharge Abstract Database)

Pathway – Colon Cancer

Resectable, curative pathway only



Metric Development

Simplified Reference Pathways

- Stages IIA, IIB/C correspond to average and higher risk of cancer recurrence, respectively

| Colon Cancer Stage II | Colon Cancer Stage III |
|--|--------------------------|
| Stage IIA (A or B) – C – D – (E optional) | (A or B) – C – D – E – F |
| Stage IIB / IIC (A or B) – C – D – E – (F optional) | |

A or B – Endoscopy full or partial

C – Imaging: abdominal CT, pelvis CT, chest imaging

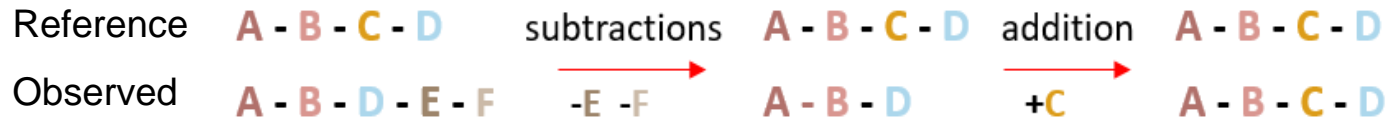
D – Surgical resection

E – Oncology consultation

F – Chemotherapy

Levenshtein Distance Metric

- Calculate Levenshtein distance metric for each subject



Therefore Levenshtein distance = # Operations = 3

- Levenshtein** counts the number of “edits” required to transform observed pathway: counts the number of additional (edit = “insert”) and missing (edit = “delete”) events along pathway
- Normalized Levenshtein used to represent “percent similarity” (higher scores are concordant)

$$d' = 1 - \frac{d(x, y)}{\max(x, y)}$$

- where $d(x, y)$ is the Levenshtein distance and $\max(x, y)$ is the maximum path length



Pathway Concordance and Survival

Objective and Methods

Objective

- Validate the developed concordance score by investigating its association with patient survival at the population level

Crude analyses

- Kaplan-Meier survival curves by *tercile groups*
- Common edit operations / sources of discordance – *lowest tercile group*

Adjusted analyses

- Extension of Cox proportional hazards model for time-dependent variables
- Time-dependent covariates:
 - Concordance score, unplanned ED visits, chemotherapy treatments
- Baseline covariates:
 - Socio-demographic variables, history of health services utilization, comorbidity history, variables related to cancer and its treatment

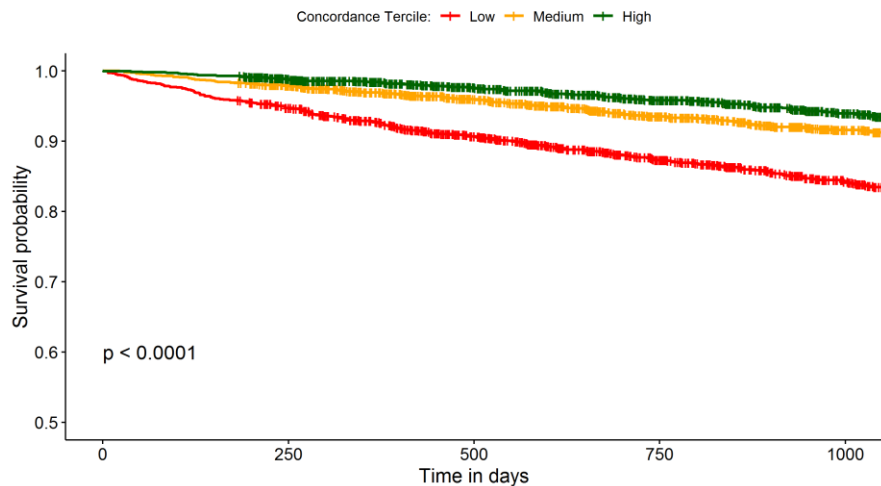


Additional / Missing Events

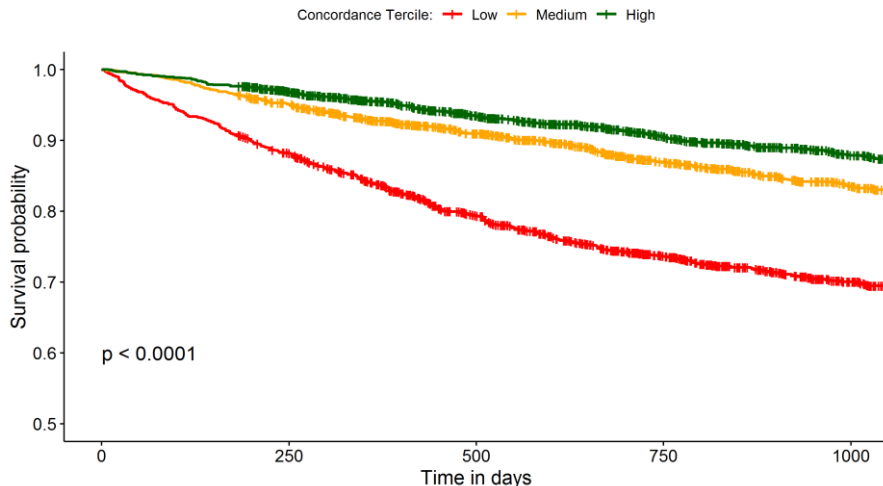
| Event type | Stage II – low concordance tercile (n = 1,646) | Stage III – low concordance tercile (n = 1,782) |
|---------------------------------------|---|--|
| Additional activity | | |
| Additional imaging test, n (%) | 1,642 (99.8%) | 1,779 (99.8%) |
| Abdomen CT, median (IQR) | 2 (1 – 3) | 3 (2 – 4) |
| Chest CT, median (IQR) | 1 (1 – 2) | 2 (1 – 3) |
| Chest X-ray, median (IQR) | 4 (2 – 7) | 4 (2 – 7) |
| Additional consultation, n(%) | 1,531 (93.0%) | 1,624 (91.1%) |
| Medical oncologist, median (IQR) | 2 (1 – 3) | 2 (1 – 3) |
| Surgical oncologist, median (IQR) | 2 (1 – 2) | 2 (1 – 2) |
| Additional endoscopy, n (%) | 704 (42.8%) | 782 (43.9%) |
| Additional radiation treatment, n (%) | 0 (0%) | 385 (21.6%) |
| Missing activity | | |
| Missing endoscopy, n (%) | 416 (25.3%) | 507 (28.5%) |
| Missing imaging test, n (%) | 186 (11.3%) | 232 (13.0%) |
| Missing chemotherapy, n (%) | N/A | 684 (38.4%) |

Survival by Concordance Tercile

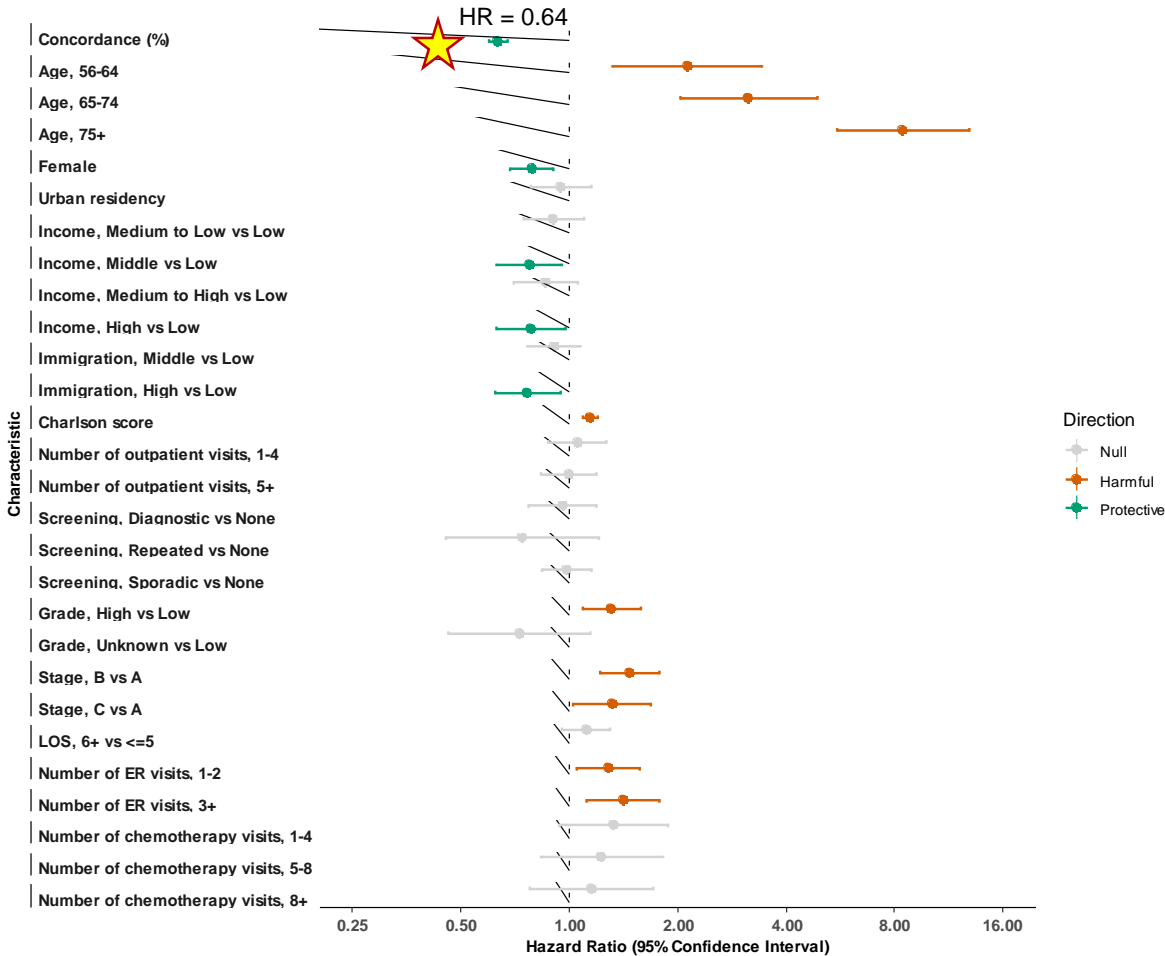
- Stage II – Kaplan-Meier survival curves



- Stage III – Kaplan-Meier survival curves



Stage II – Survival Analysis Results



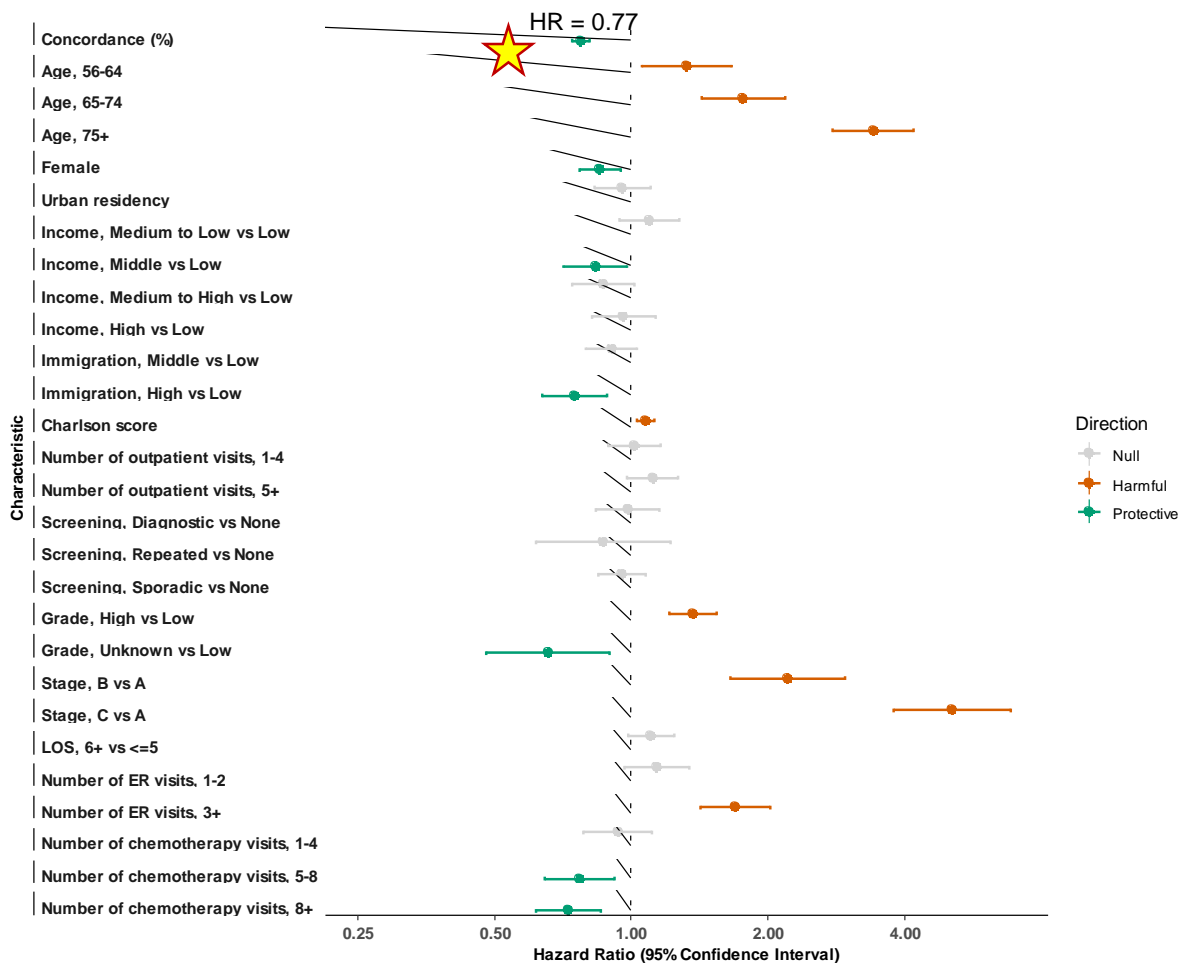
Higher rate of death:

- Older age
- Charlson score
- Higher stage
- High tumor grade
- ED visits

Lower rate of death:

- Female
- Highest immigrant population
- Pathway concordance

Stage III – Survival Analysis Results



Higher rate of death:

- Older age
- Charlson score
- Higher stage
- High tumor grade
- ED visits

Lower rate of death:

- Female
- Highest immigrant population
- Unknown tumor grade
- Chemotherapy treatments
- **Pathway concordance**



Clustering and Segmentation Analysis

Deriving Actionable Insights

How can we use concordance measurement to inform quality improvement?

Objectives

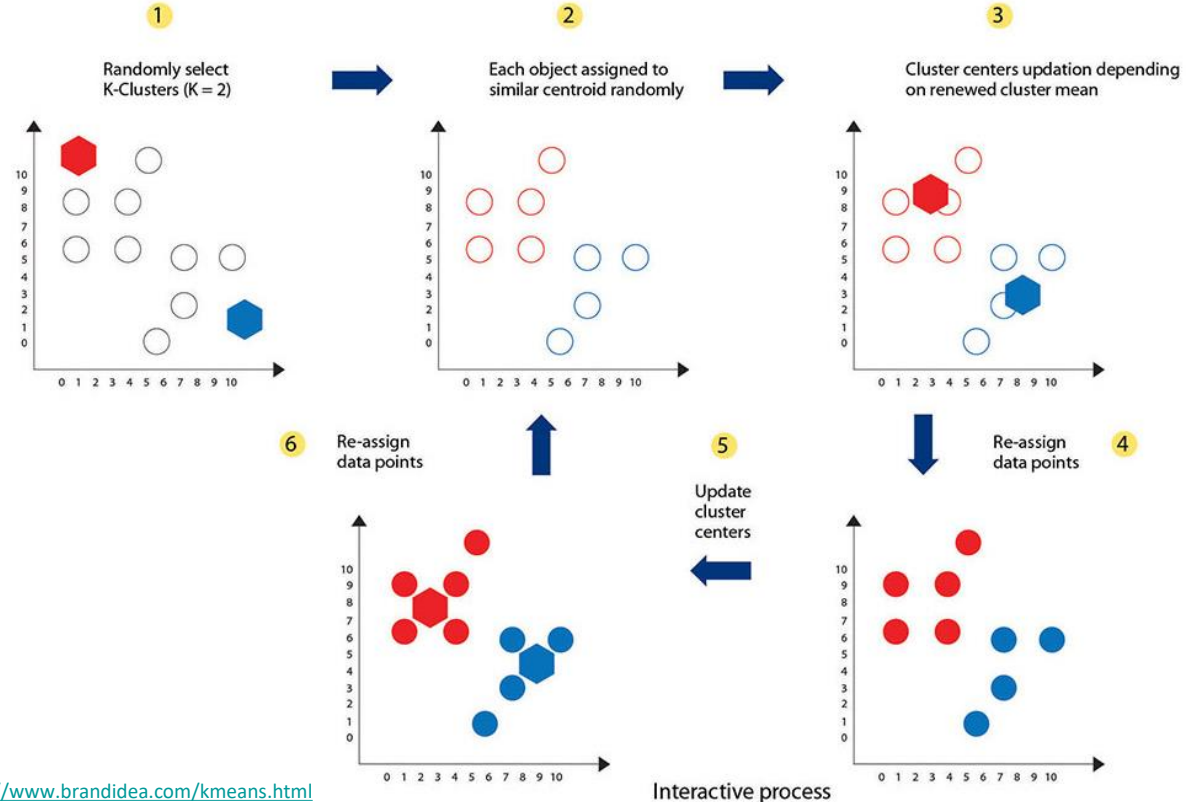
- Find subpopulations of patients with "modifiable" factors to inform future quality improvement efforts
- Use unsupervised learning algorithms such as clustering to identify heterogeneous groups within the population of colon cancer patients
- Assess the additional benefit of incorporating a concordance metric in the analysis

K-Means Clustering

Methods

- Partition data into distinct groups so that the observations within each group are similar, while observations in other groups are different
- Similarity is measured by squared Euclidian distance:

$$\frac{1}{|C_K|} \sum_{i,i' \in C_K} \sum_{j=1}^p (x_{ij} - x_{i'j})^2$$



Clustering Analysis – What Did We Find?

Variables used for analysis

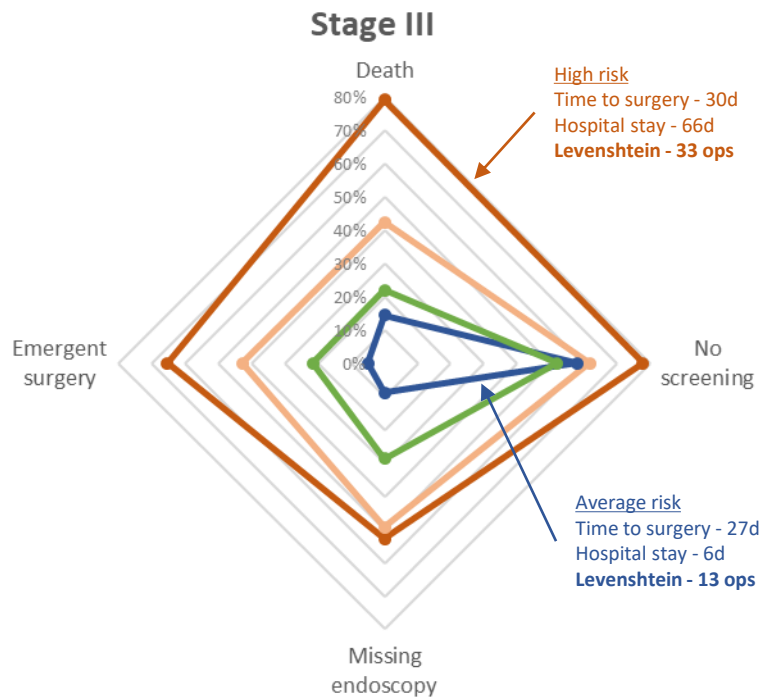
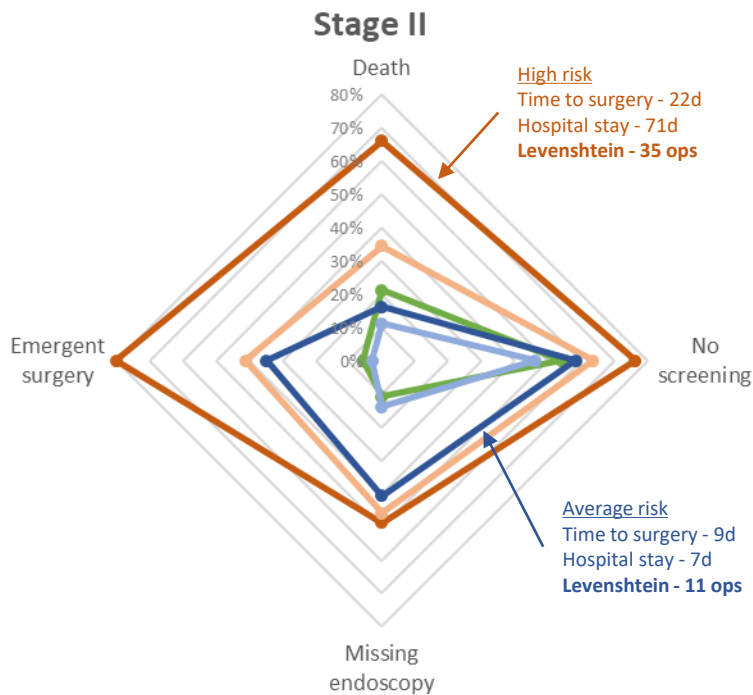
- Time from diagnosis date to surgical resection
- Length of hospital stay
- Levenshtein concordance metric (un-normalized)

Found clusters to target

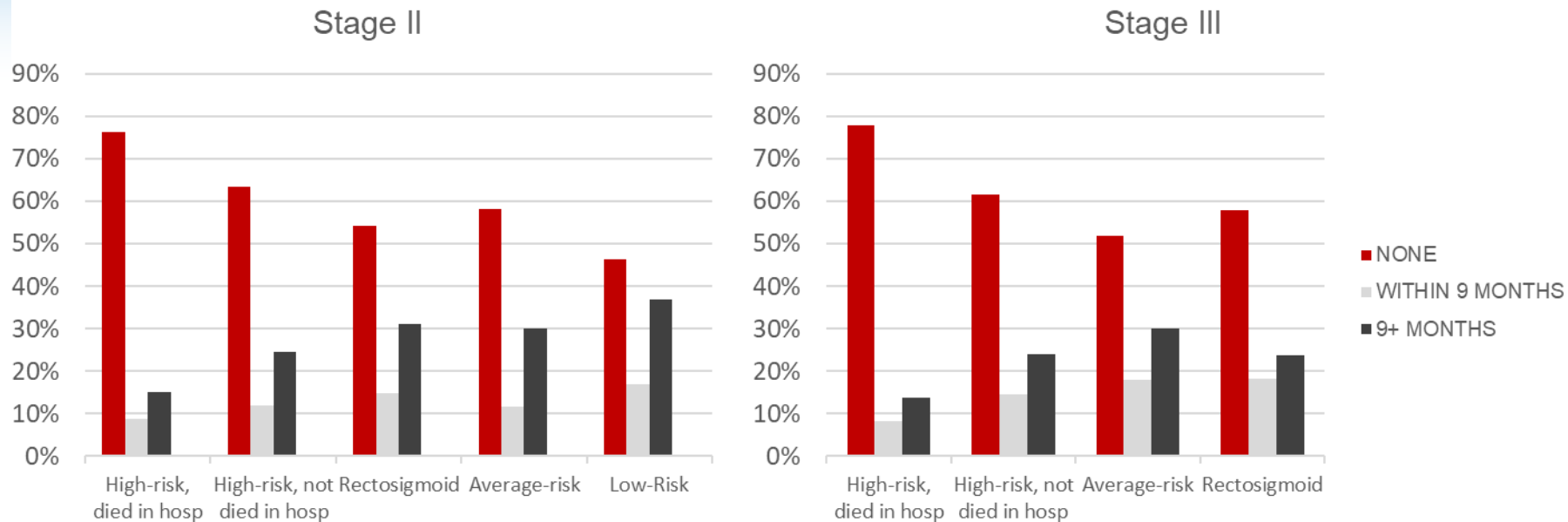
- High mortality with variation in time-to-events
- Identified subgroups with high prevalence of radiation treatment (cancer in rectosigmoid junction)
- Identified lack of "early identification" activity (screening, endoscopy)

Adding the Levenshtein metric resulted in refined data segmentation

Clusters Profiles



Cancer Screening by Cluster Groups

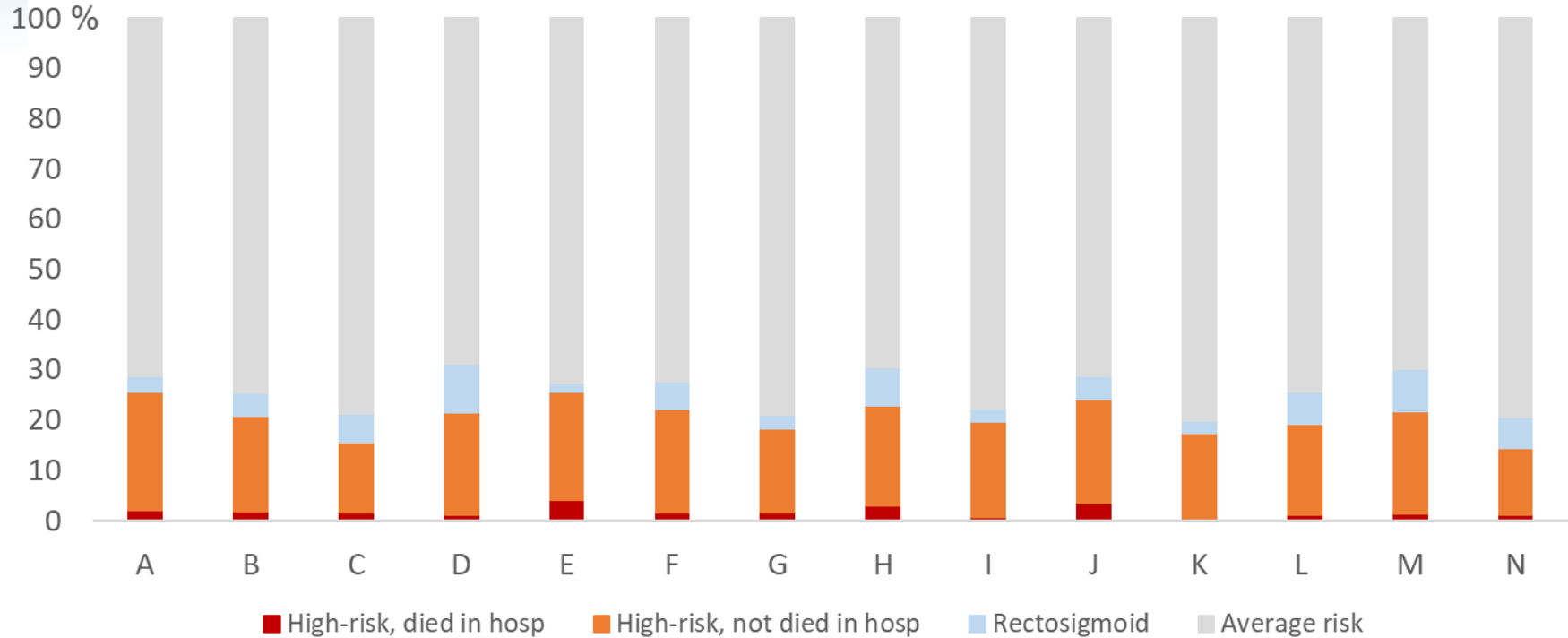


High-mortality groups more likely to have no screening.

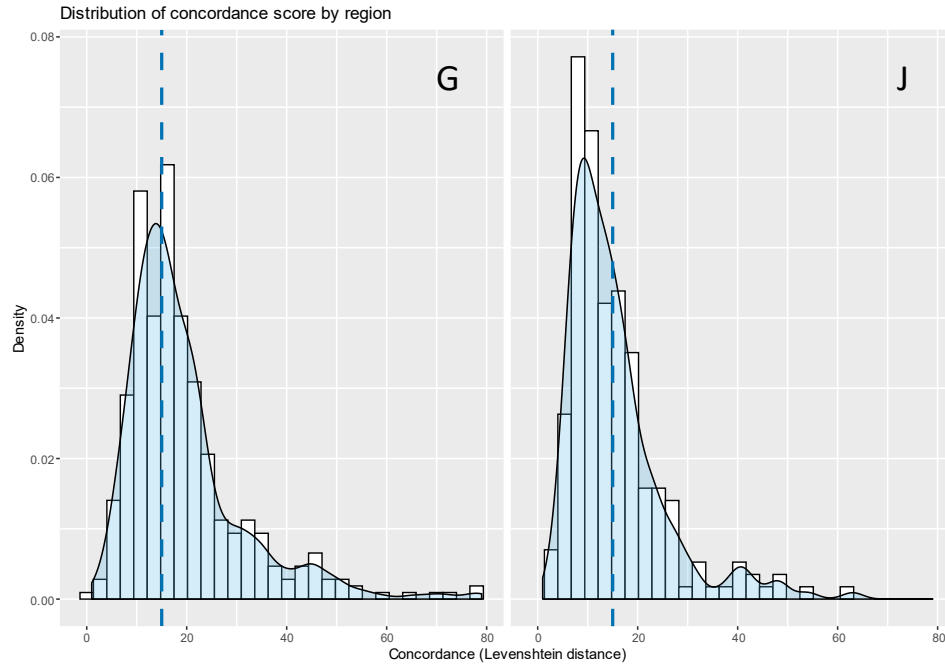


Regional Analysis

Stage III – Regional Variation in Cluster Volumes



Stage III – Regional Variation in Concordance



| Region | % Above provincial median |
|--------|---------------------------|
| G | 61.0% |
| J | 41.0% |



Conclusion

Conclusion

- Demonstrated feasibility of measuring pathway concordance across the cancer continuum at a population based level
- Novel application of measurement shows promising results in demonstrating:
 - Regional and practice variation
 - Association with improved survival
- Approach could be used to identify opportunities for quality improvement and measuring system performance



Next Steps

Evaluation of metrics

- To determine the optimal metric – Ontario Health (CCO) perspective
- Currently drafting multiple criteria to rank metrics with expert group(s)
- Goal is to endorse one metric, or multiple metrics based on strengths/weaknesses

Extension to breast cancer pathways

- Developing metrics for breast cancer pathway concordance analysis
- Continuing to work with the University of Toronto (MIE) to define reference pathways and assess metric performance



Acknowledgements

Data & Decision Sciences

Luciano Ieraci

Maria Eberg

Emmett Borg

Saba Vahid

Paula Murray

Ali Vahit Esensoy

Disease Pathway Management

Katharina Forster

Sarah Bastedo

Marta Yurcan

Jocelyn Pang

Dana Chmelnitsky

Jill Ross

Funding Unit

Shannon Milroy

Jason Sutherland

Judith Wong

Katharine Sun

May Seto

Nancy Shukla

QME & Cancer Analytics

Steven Habbous

Tharsiya Martin

Kyle Tsang

Shirley Li

Kelly Woltman

Louis Fu

Sue Su-Myat

Research Office

Funding support

Clinical Leads

Dr. Claire Holloway

Dr. Erin Kennedy

Questions / Discussion

